

Vessel	Arr/Dep	Date	Pilots Name		Berth	Shift Ship	Bth
		Time	Capt.		Bow		Bow

VESSELS DETAILS		Prop No	Rudder	Year Built	Tidal Information		
MAX DRAFT	CPP/Fix		Thr. Fwd	LOA	Time	Height	Range
	Prop/Azi		Thr. Aft	Beam		Low	
	Rotation		Main Eng.	HOA		High	

Main Channel		DW	Planned Approach Area		Berth Calcs on Arrival		Berth Calc next 24 hours
Min. Channel Depth			Min. Planned Approach		Berth Depth		Side To
(+) Tide @			(+) Tide @		(+) Tide @		Berth depth
Available Depth			Min. Planned App Depth		Depth at Berth		(+) Min Tide
Maximum Draft			Maximum Draft		Maximum Draft		Avail depth
10% of Max Draft			Min UKC		UKC at berth (-) 0.4 or 0.5		(-) 0.4 or 0.5
Required Depth			Required Depth		Required Depth		Max Draft
UKC (Dynamic)			UKC (Dynamic)		UKC (Static)		This Max draft shall not be exceeded during the lowest tide of the vls stay
Is avail. Depth ≥ Reqd?			Has Approach Depth been checked?		This is the available UKC (Static) on the Vessels berthing only		
Est. Tide Strength			Est. Tide Strength				

Constrained By Draft?	Y	N	Fresh Water?	Y	N	FW Position	F	M	A	Ladder	P	S	L/N Port
-----------------------	---	---	--------------	---	---	-------------	---	---	---	--------	---	---	----------

The bridge team is requested to monitor the Pilots actions at all times. DO NOT hesitate to question him, if doubt.

For assistance or EMERGENCY in port, contact "Auckland Harbour Control" on VHF Ch 12

PoAL operates at Maritime Security Level 1, unless notified otherwise. Contact PFSO on 027 229 6144

Comments	Y/N	Harbour traffic discussed?
Passage Plan exchanged?		Anchors clear, man fwd?
Courses been agreed upon?		Pilot card been sighted?
Defects been noted?		VHF set on Ch. 12?

First/Last Line

One(1) Line at a time

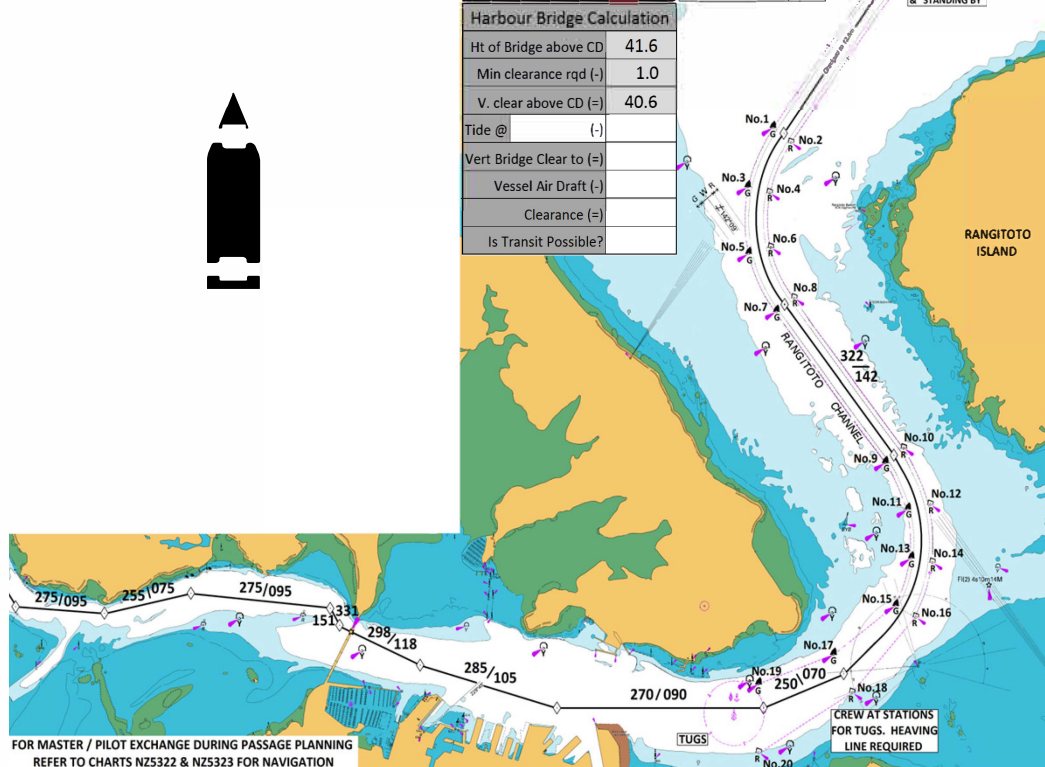
TUG LINES

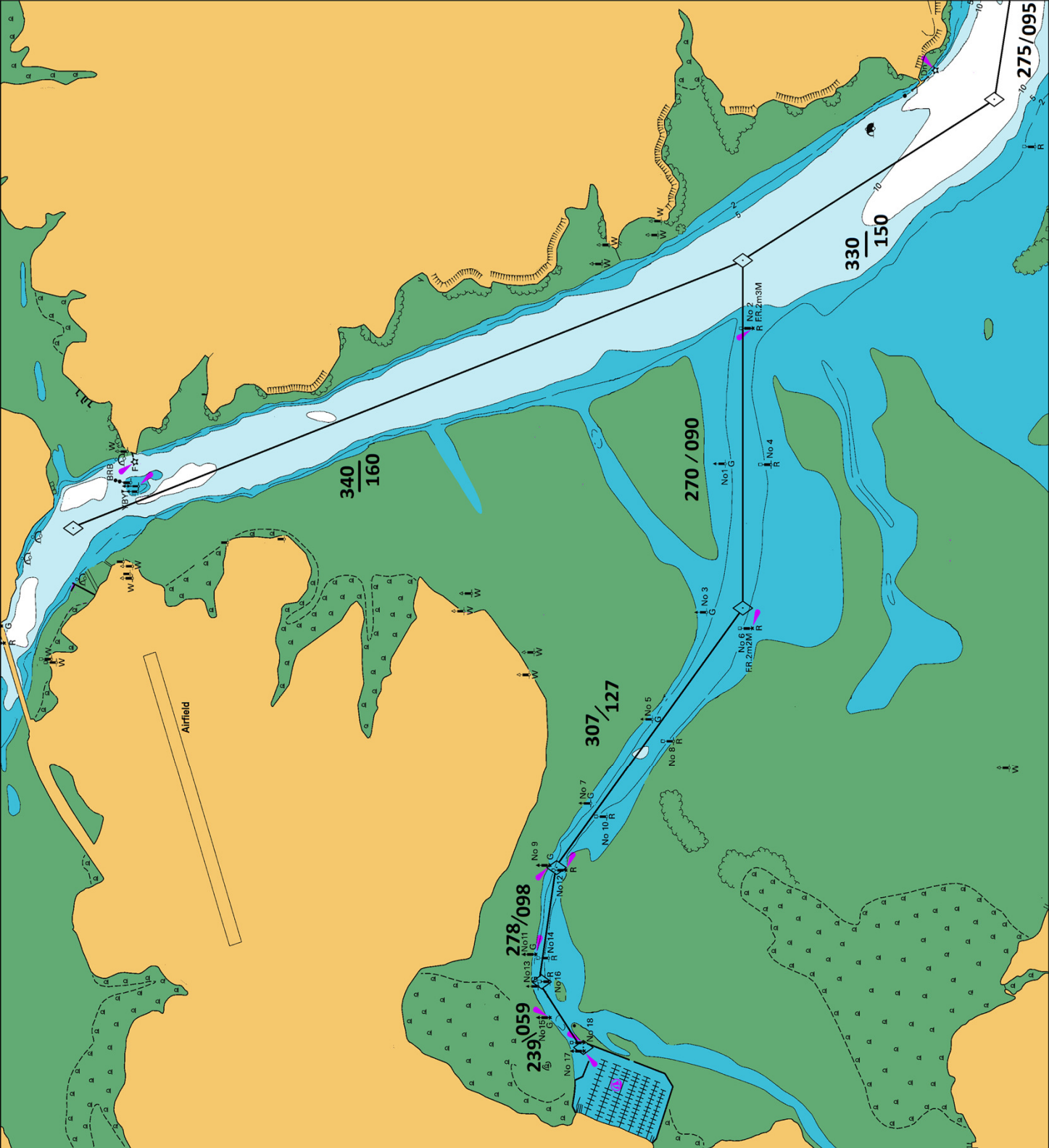
Tug Pull (t)

Hauraki	70
Waka Kume	50
Waipapa	50
Daldy	22

ALL COURSES ARE INDICATIVE ONLY AND MAY BE MODIFIED FOR WIND, TIDE AND TRAFFIC

ALPHA PILOT BOARDING GROUND 36 44.20 S 174 59.50 E





ALL COURSES ARE INDICATIVE ONLY AND MAY BE MODIFIED FOR WIND, TIDE AND TRAFFIC

FOR MASTER PILOT EXCHANGE DURING PASSAGE PLANNING REFER TO CHART NZ5323 FOR NAVIGATION

