

# Truck Service Statistics

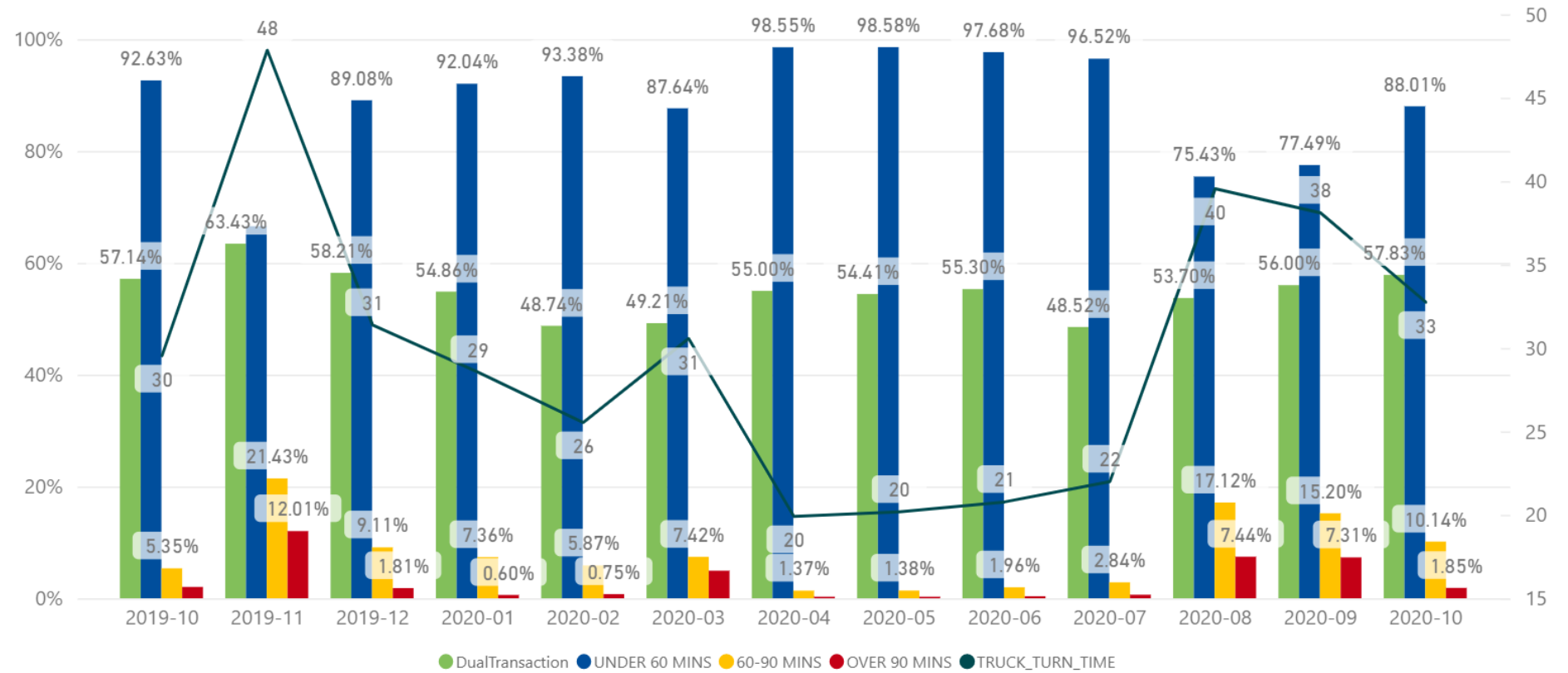
At Fergusson Container Terminal, Ports of Auckland is committed to providing a consistent service to road carriers, enabling import and export cargo to be picked up and delivered in a timely way.

## Key results and initiatives for October 2020:

- In October the % of trucks turned under 60 minutes was 88.01%.
- % of trucks with a turn time over 1 hour was 11.99%.
- Average Truck Turn time for the container terminal was 33 min in October.
- Link truck turn time was 8 min in October.
- 28.46% of trucks arriving at the Fergusson Container Terminals were early with 5.24% arriving late.
- Average Import Dwell Time was 1.92 days, compared to 1.49 days in September 2020.

The time to turn a truck is measured from the time the driver processes at the kiosk or road office until the last move for that visit.

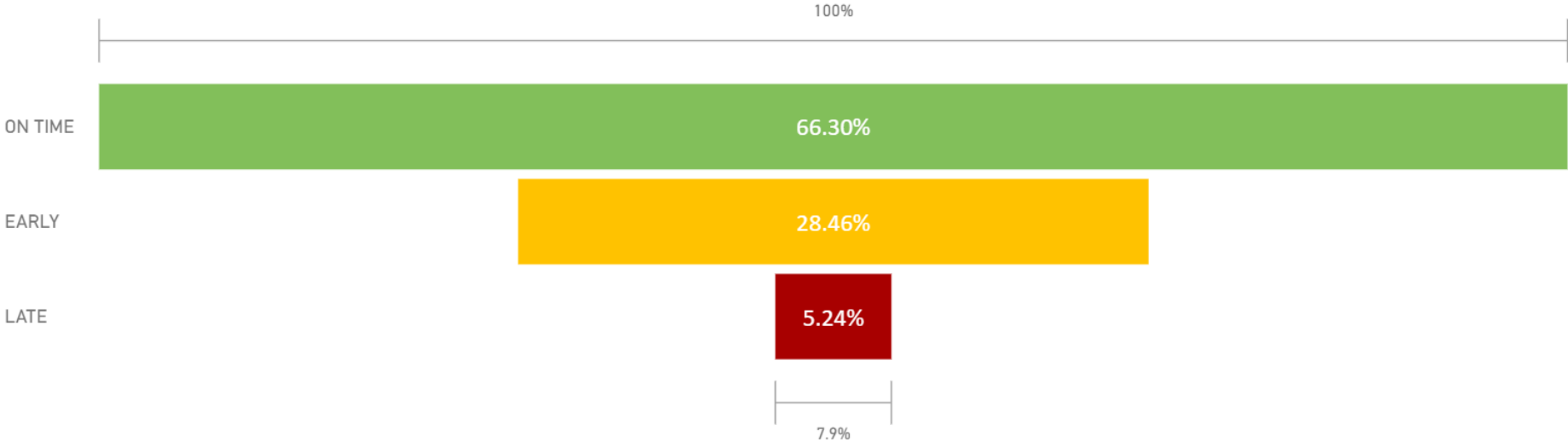
### Truck Turn Times - Fergusson Container Terminal



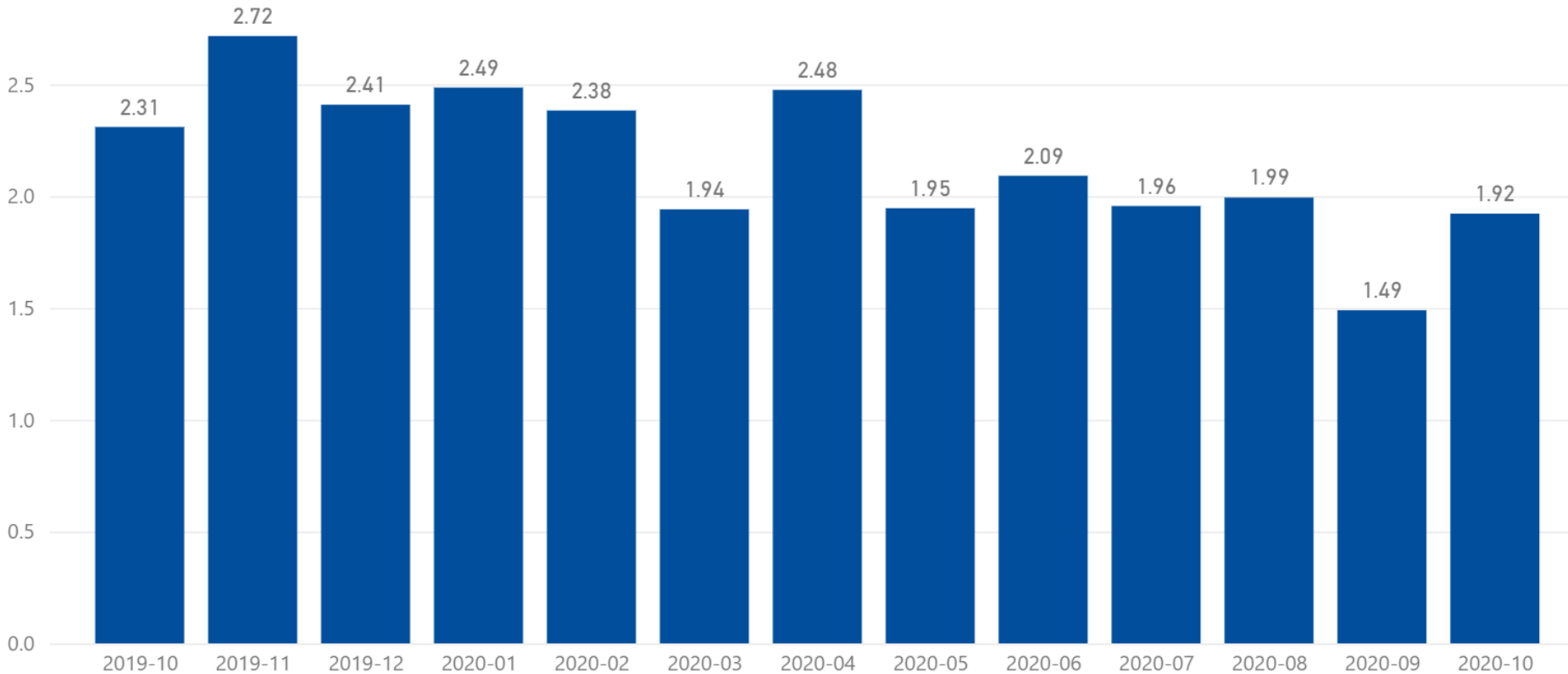


Truck on-time performance for VBS bookings.

---



Dwell time for import containers is calculated from the time a container is discharged from vessel until the container is delivered from the terminal.



Average truck-turn time for the Link Facility.

