

Truck Service Statistics

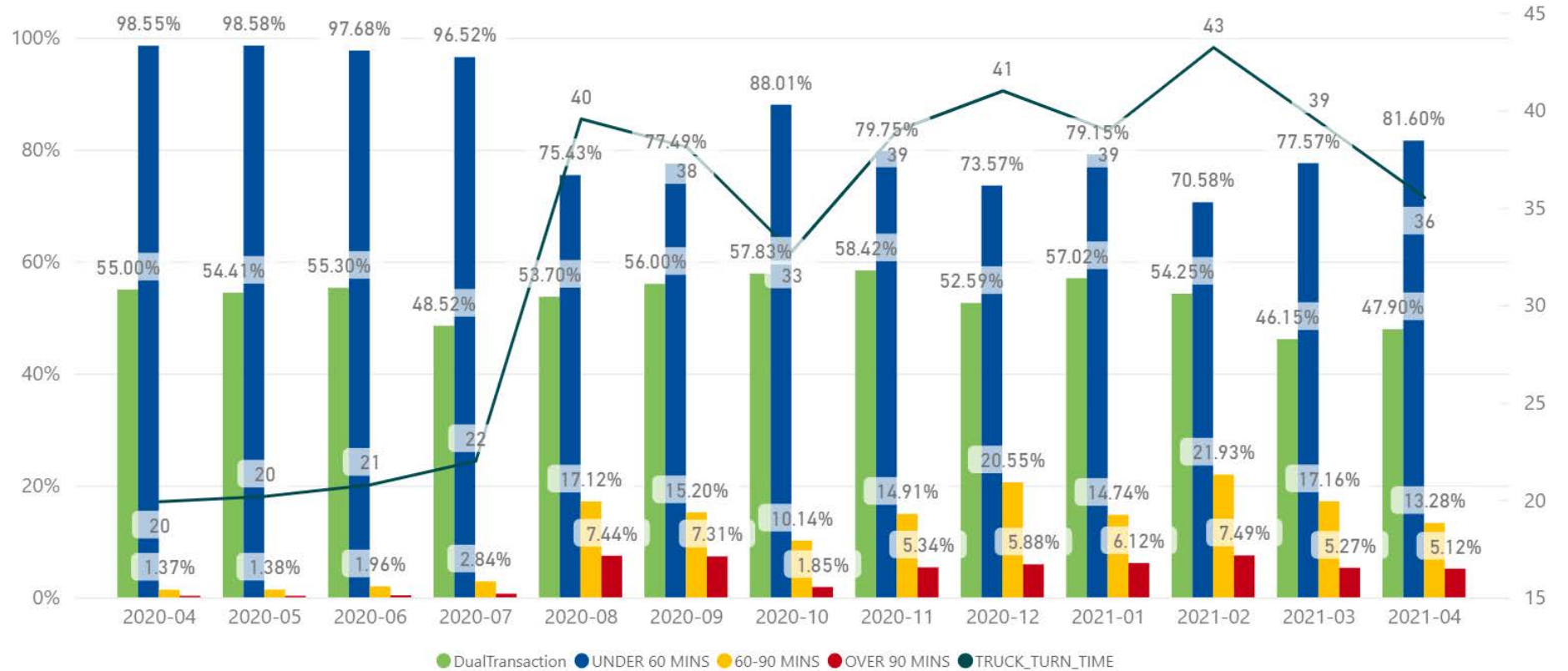
At Fergusson Container Terminal, Ports of Auckland is committed to providing a consistent service to road carriers, enabling import and export cargo to be picked up and delivered in a timely way.

Key results and initiatives for April 2020:

- In April the % of trucks turned under 60 minutes was 81.60%.
- % of trucks with a turn time over 1 hour was 18.40%.
- Average Truck Turn time for the container terminal was 36 min in April.
- Link truck turn time was 7 min in April.
- 22.95% of trucks arriving at the Fergusson Container Terminals were early with 6.17% arriving late.
- Average Import Dwell Time was 2.58 days, compared to 2.08 days in March 2021.

The time to turn a truck is measured from the time the driver processes at the kiosk or road office until the last move for that visit.

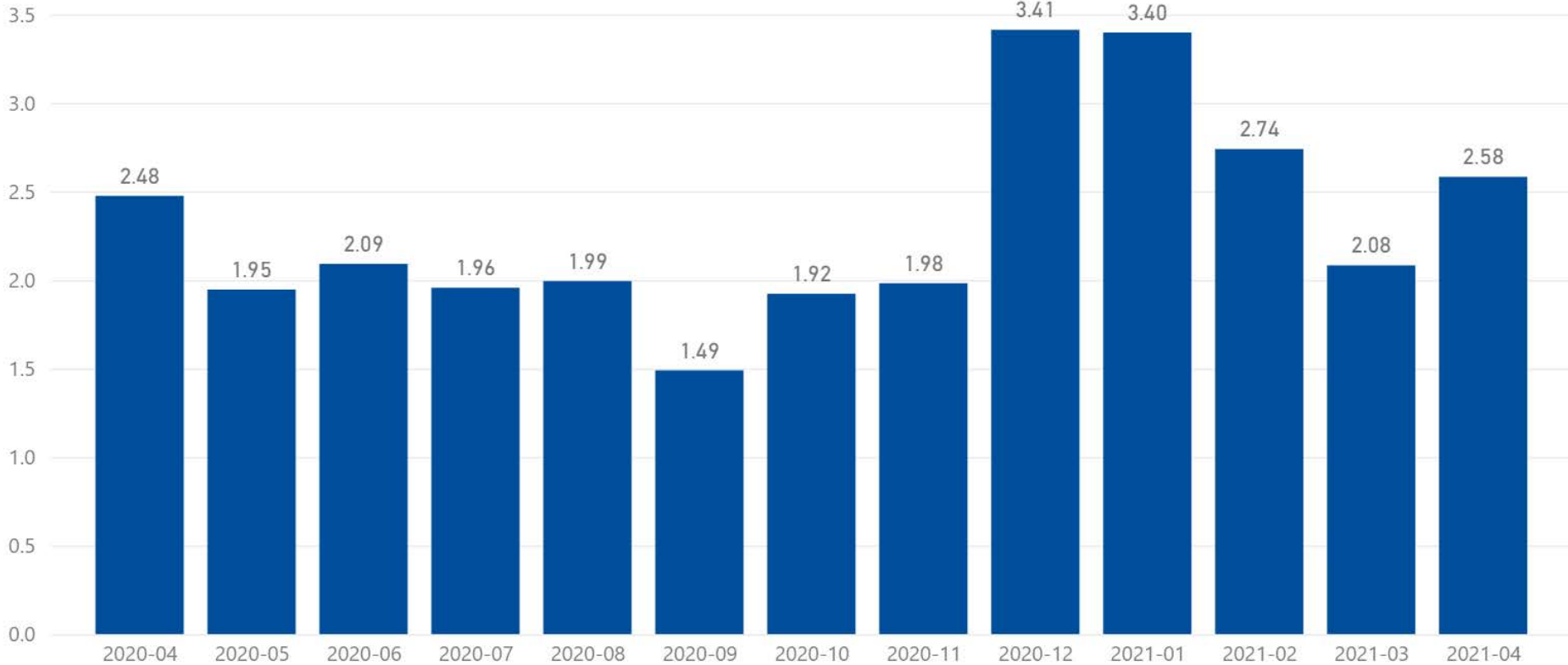
Truck Turn Times - Fergusson Container Terminal



Truck on-time performance for VBS bookings.



Dwell time for import containers is calculated from the time a container is discharged from vessel until the container is delivered from the terminal.



Average truck-turn time for the Link Facility.

