

Truck Service Statistics

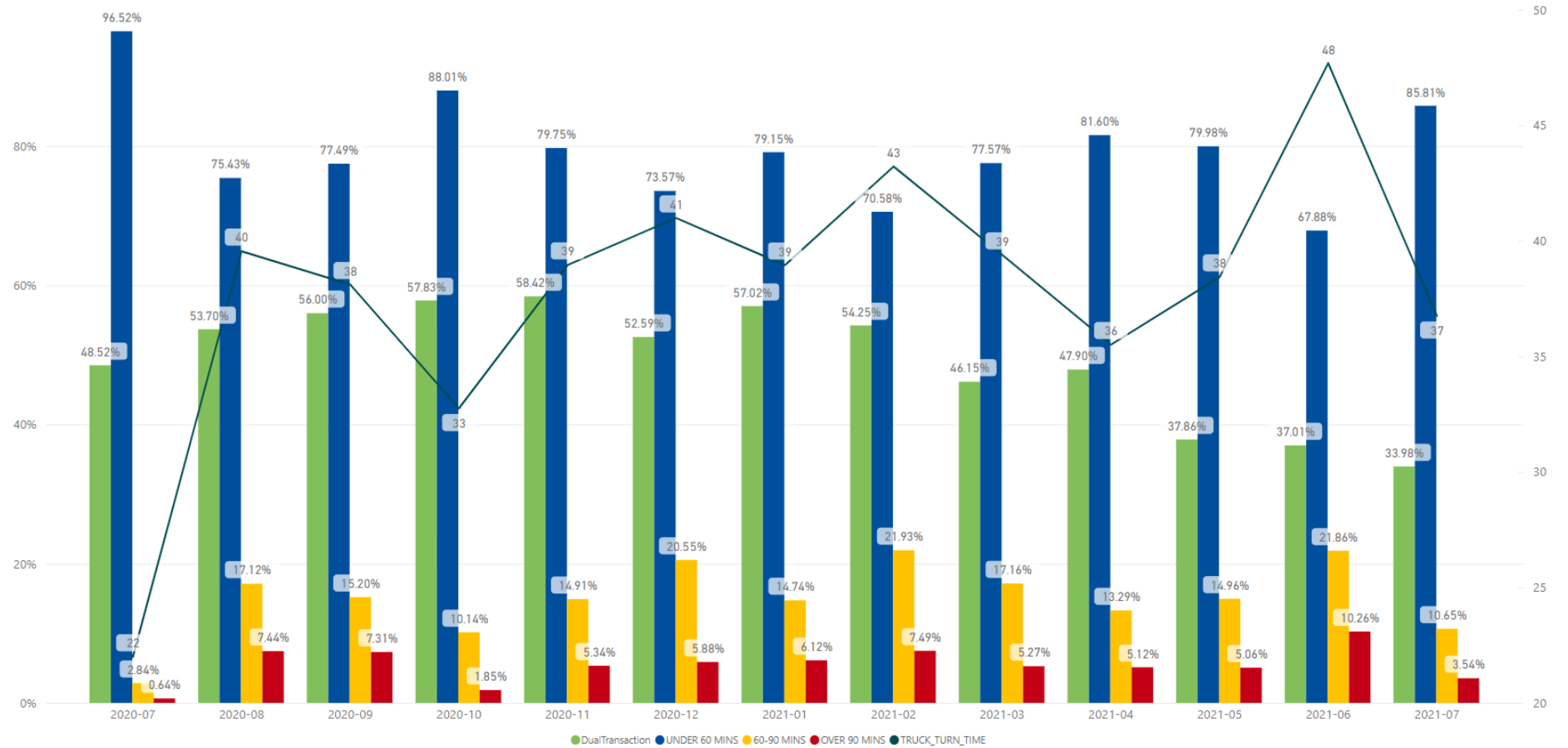
At Fergusson Container Terminal, Ports of Auckland is committed to providing a consistent service to road carriers, enabling import and export cargo to be picked up and delivered in a timely way.

Key results and initiatives for July 2021:

- In July the % of trucks turned under 60 minutes was 85.81%.
- % of trucks with a turn time over 1 hour was 14.19%.
- Average Truck Turn time for the container terminal was 37 min in July.
- Link truck turn time was 8 min in July.
- 40.85% of trucks arriving at the Fergusson Container Terminals were early with 3.13% arriving late.
- Average Import Dwell Time was 2.61 days, compared to 2.67 days in June 2021.

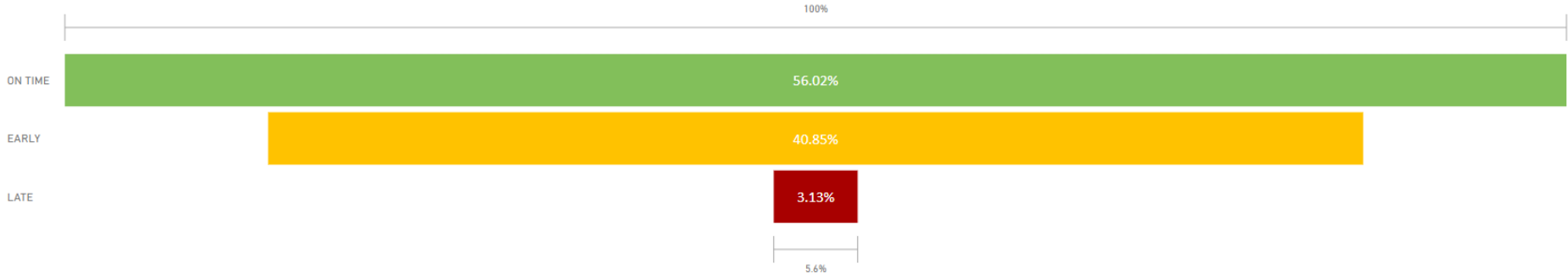
The time to turn a truck is measured from the time the driver processes at the kiosk or road office until the last move for that visit.

Truck Turn Times - Fergusson Container Terminal



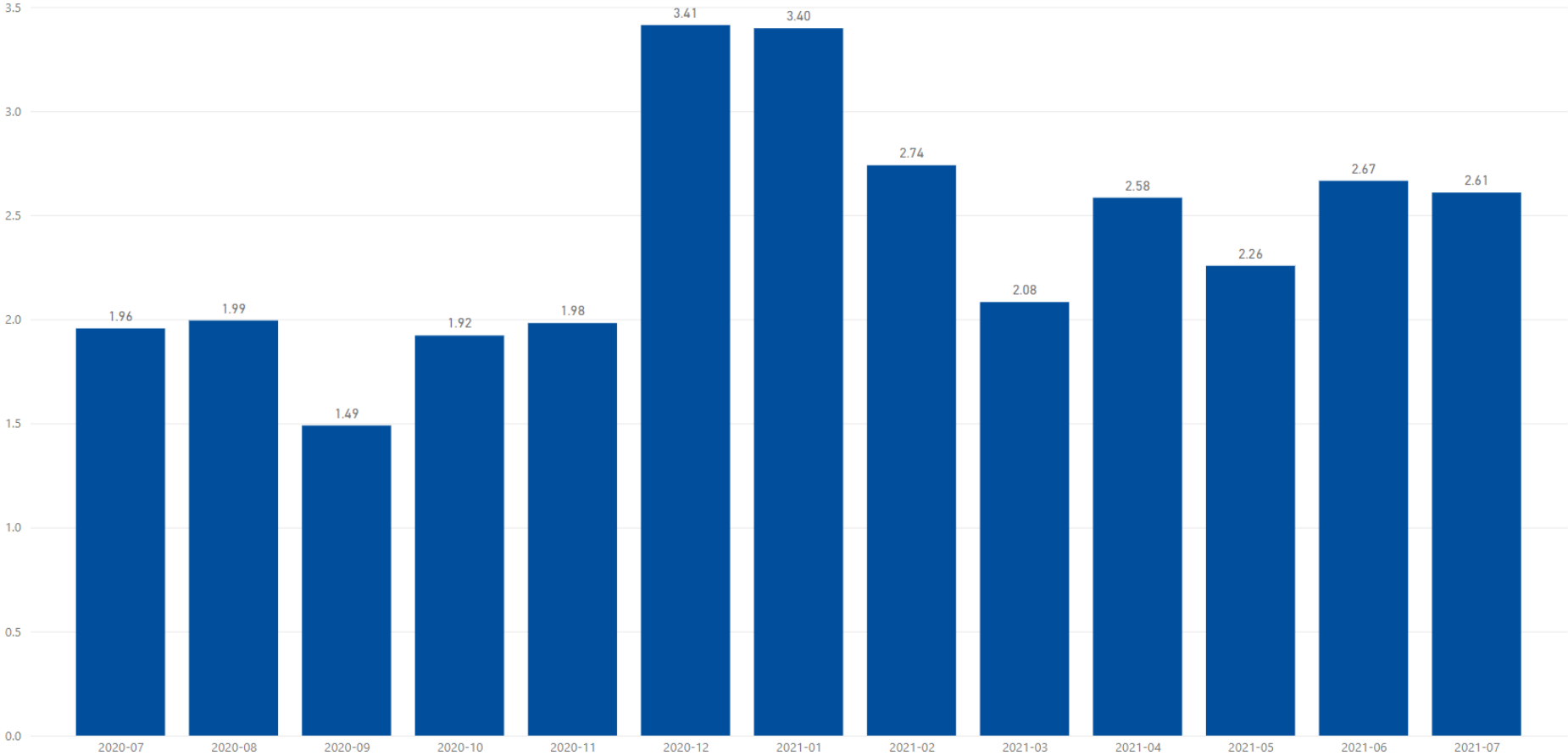


Truck on-time performance for VBS bookings.





Dwell time for import containers is calculated from the time a container is discharged from vessel until the container is delivered from the terminal.



Average truck-turn time for the Link Facility.

