

Truck Service Statistics

At Fergusson Container Terminal, Ports of Auckland is committed to providing a consistent service to road carriers, enabling import and export cargo to be picked up and delivered in a timely way.

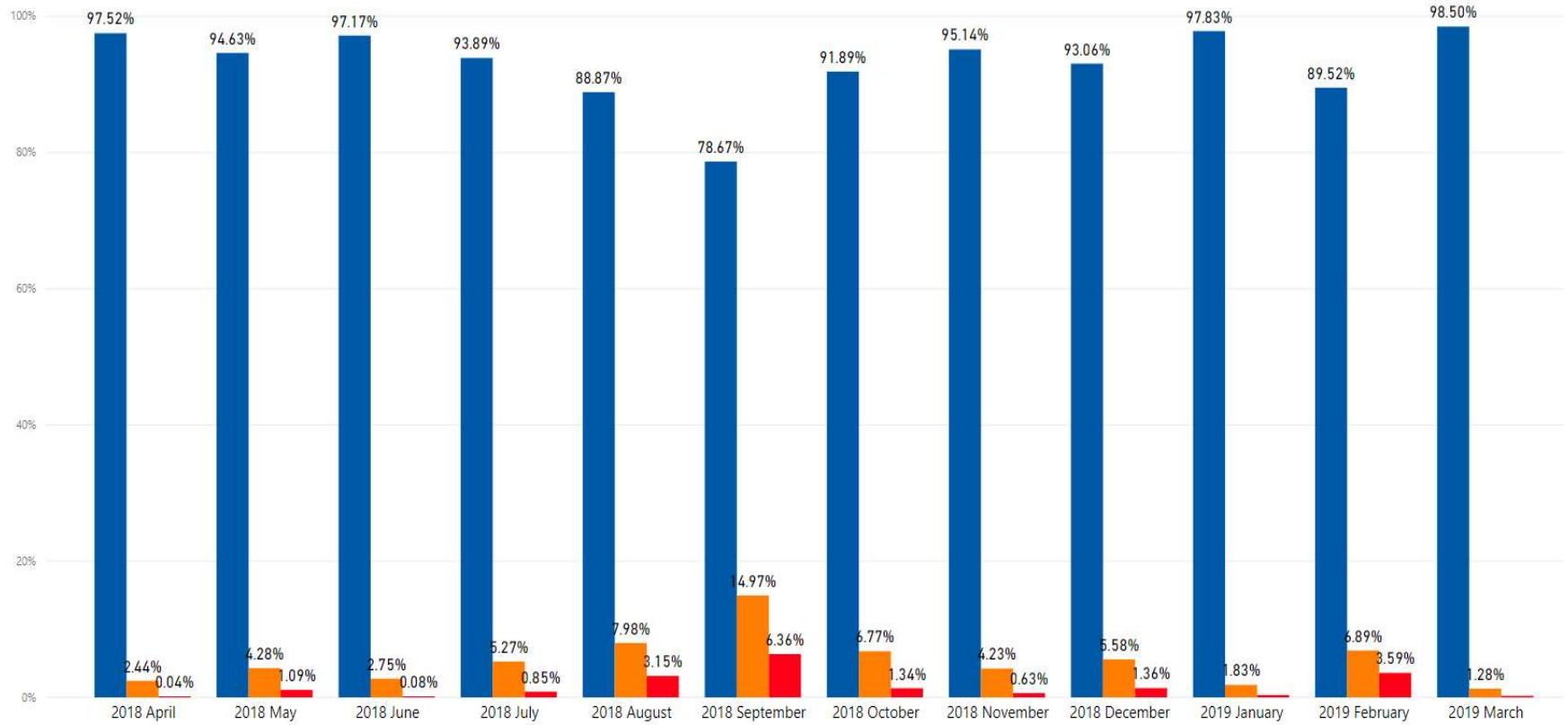
Key results and initiatives for March 2019:

- In March the % of trucks turned under 60 minutes was 98.5%.
- % of trucks with a turn time over 1 hour was 1.5%.
- Average Truck Turn time for the container terminals was 21.7 min for March.
- Link truck turn time was 14.4 min in March.
- 27% of trucks arriving at the Fergusson Container Terminals were early with 2.4% arriving late or their VBS booking.
- % of “No Shows” in March was 8.50%.
- Average Import Dwell Time was 2.39 days, compared to 3.48 days in February 2019.

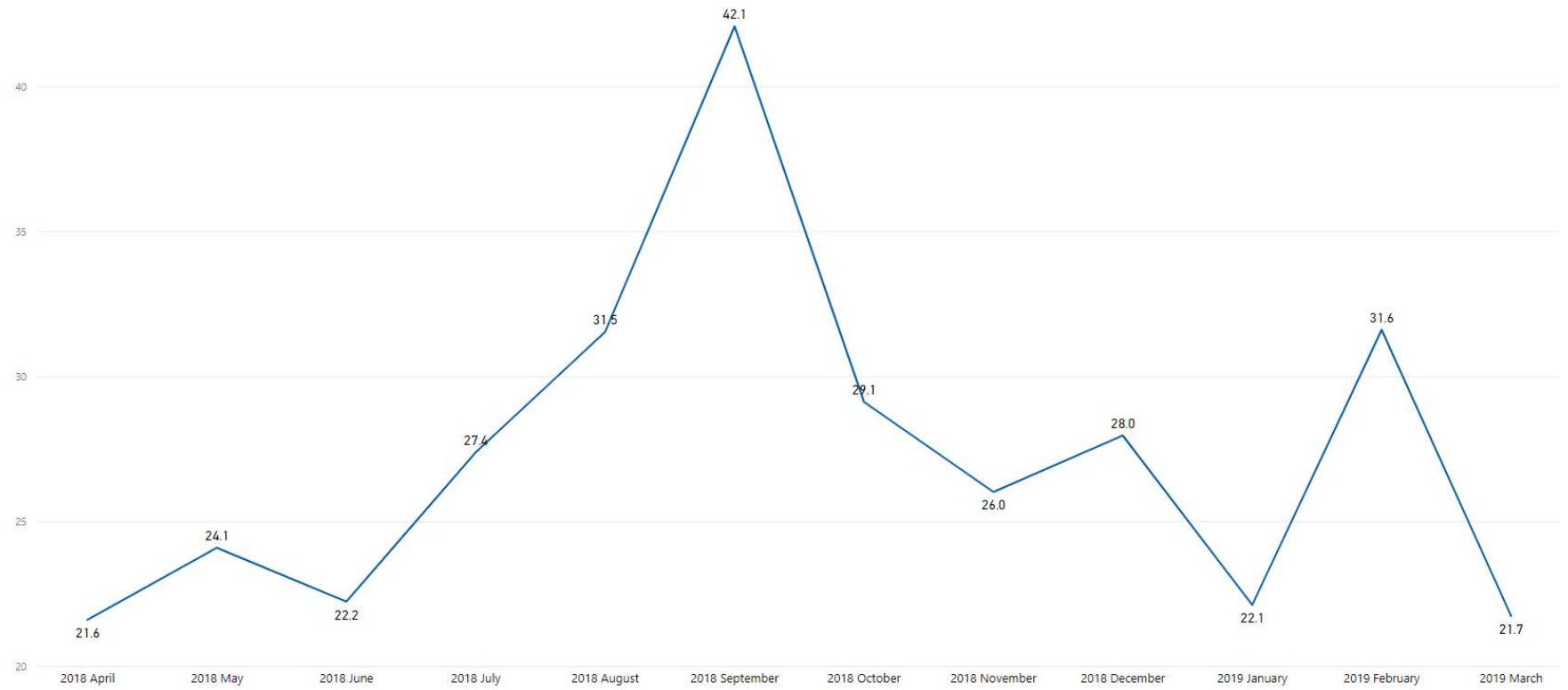
The time to turn a truck is measured from the time the driver processes at the kiosk or road office until the last move for that visit.

Truck Turn Times - Fergusson Container Terminal

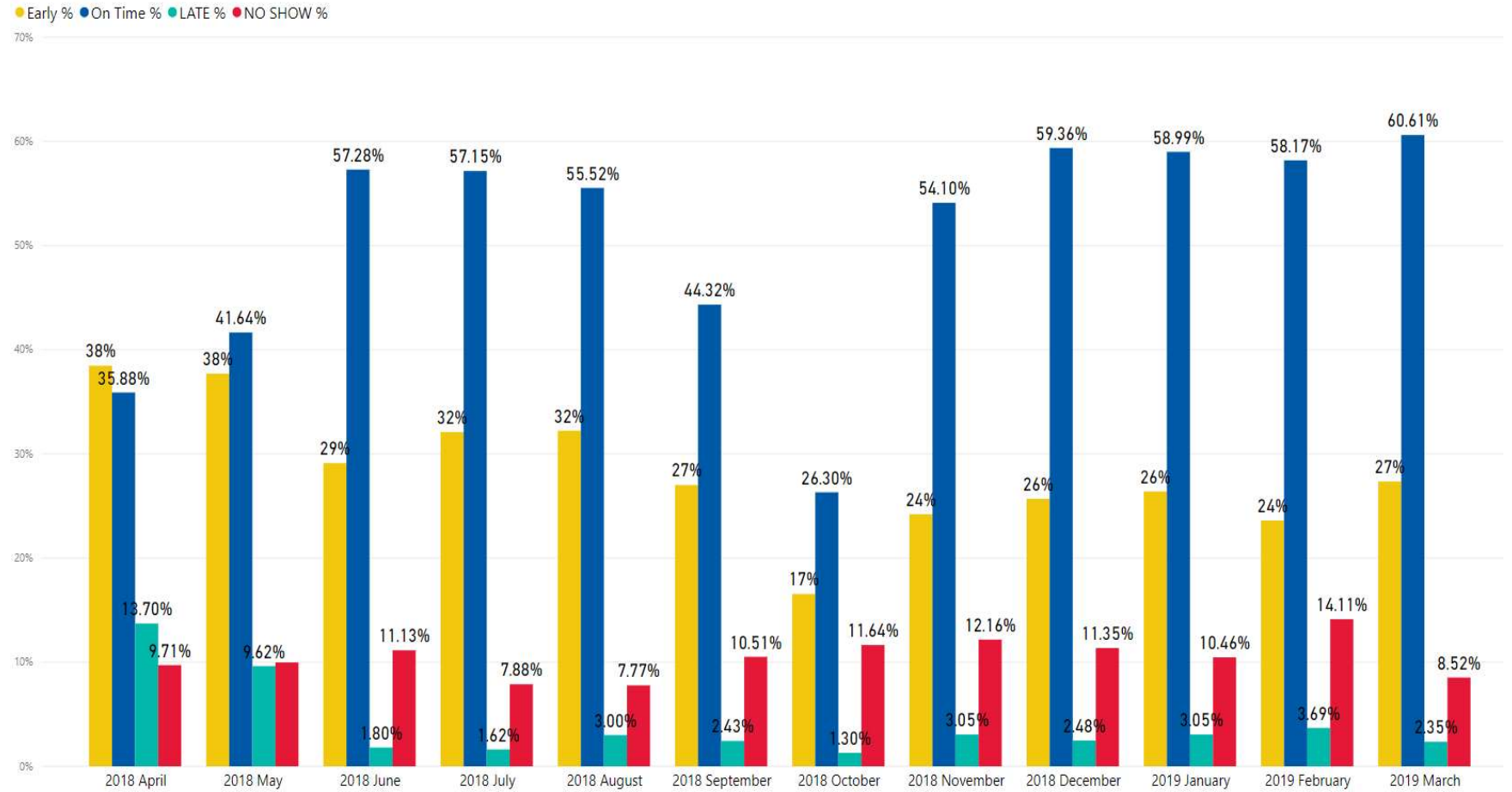
● Under 60 MINS % ● 60 to 90 MINS % ● Over 90 MINS %



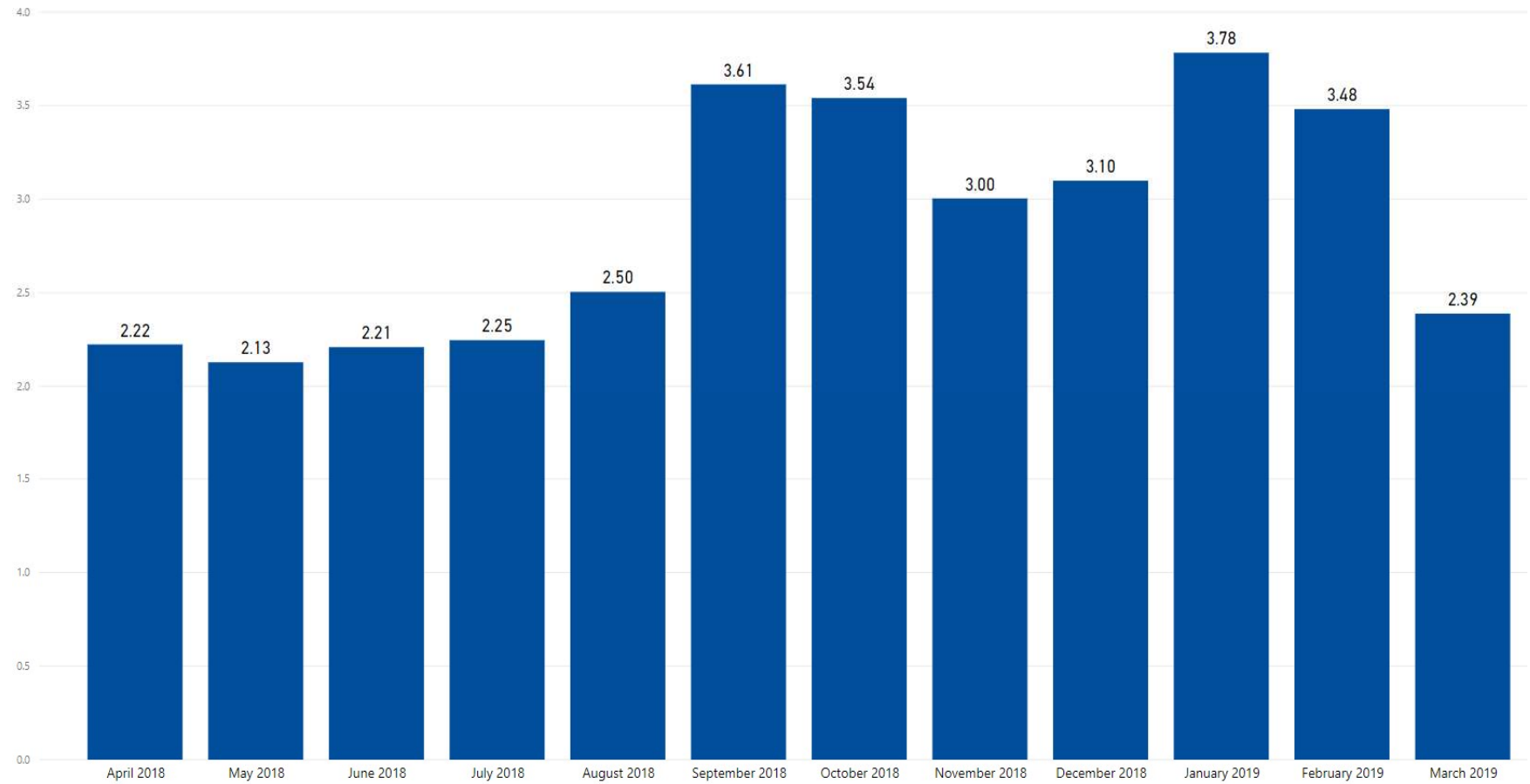
Average truck-turn time by month at the Fergusson Container Terminal



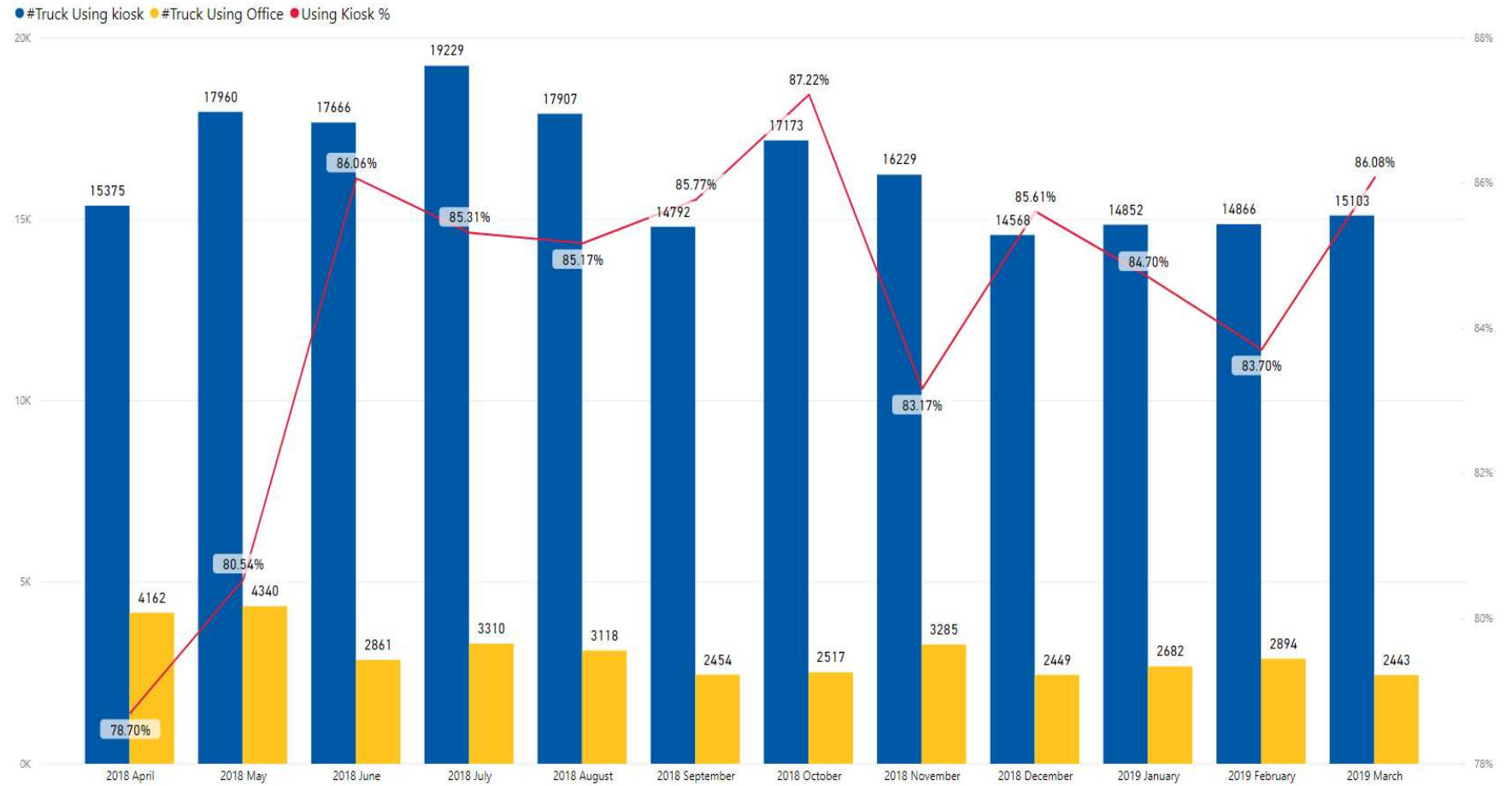
Truck on-time performance for VBS bookings.



Dwell time for import containers is calculated from the time a container is discharged from vessel until the container is delivered from the terminal.



The proportion of total trucks visiting Fergusson Container Terminal that process using the self-service kiosks.



Average truck-turn time for the Link Facility.

