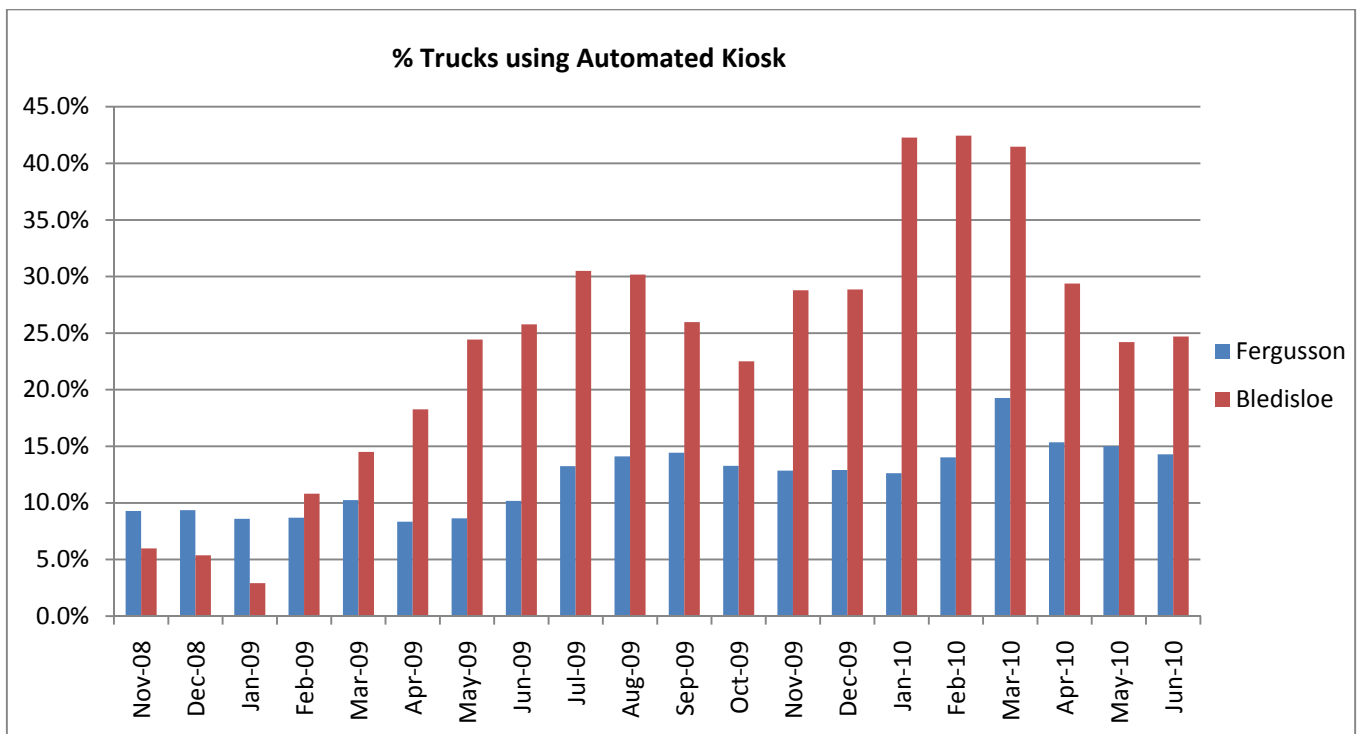


Truck Service Statistics

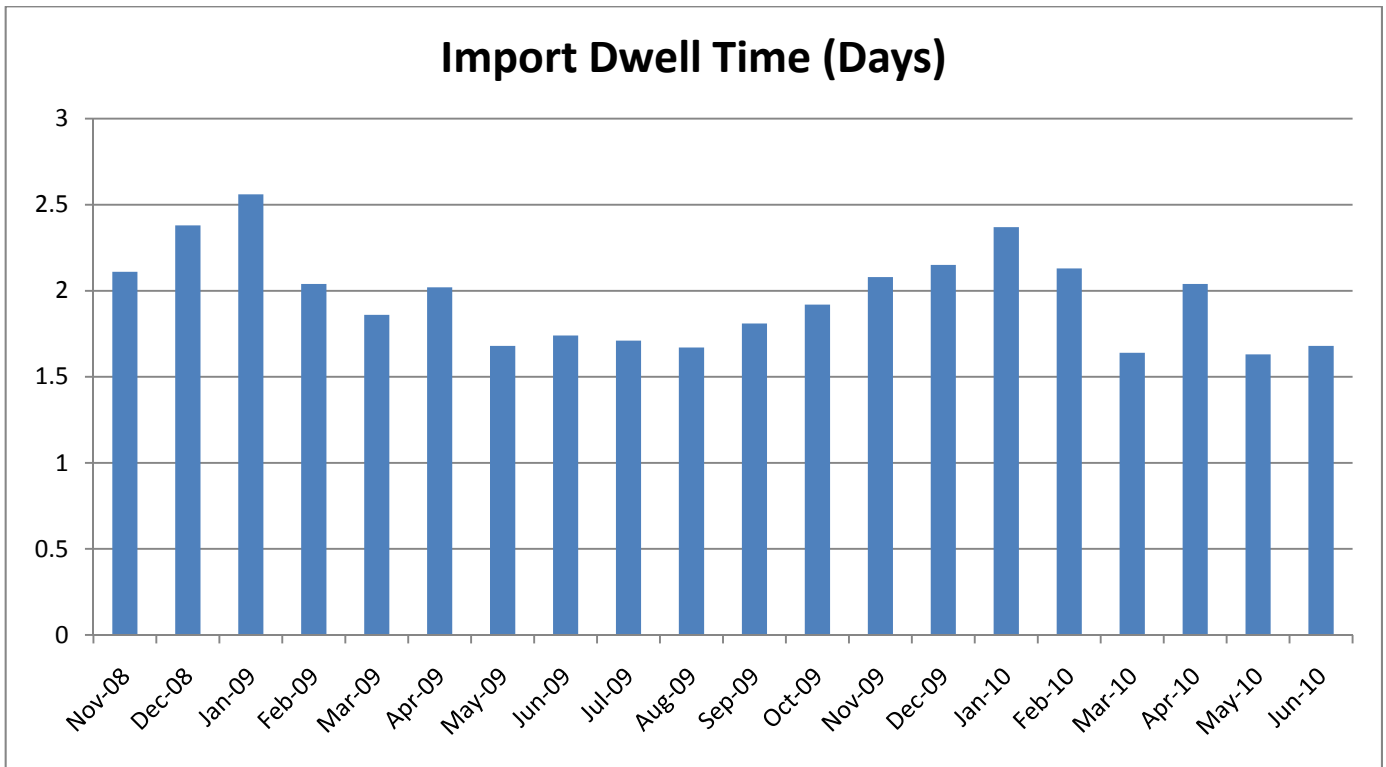
Ports of Auckland's Container Terminals is committed to efficiently providing a consistent and timely service to road carriers, enabling cargo to be removed from the port as soon as possible after discharge from a vessel.

Key results and initiatives for June 2010

- The average time to turn a truck was less than 24 minutes with more than 76% turned in less than 30 minutes, the best result since the container terminals were consolidated in July 2009, and close to the target 80%.
- During June, a large number of trucks arriving outside of the VBS booking times meant that less than 25% of trucks serviced at Bledisloe Road Exchange and less than 15% at Fergusson used the self service kiosks for unassisted gate entry.
- The average Dwell Time for import containers was a seasonally low 1.7 days and slightly better than for the same month last year.
- A working group comprising representatives from freight forwarders, road carriers, and shipping lines has invested considerable time towards the development of a new system for pre-notification and gate entry.
- An additional 8.4% stevedores have been recruited and trained during June and further recruitment and training is planned for each of July, August and September, all in preparation for the upcoming peak import season.



- Dwell time for import containers is calculated from the time a container is discharged from vessel until the container is removed from the terminal.



- The time to turn a truck is measured from the time that the driver receives authorisation to enter the gate, until all of the containers have been unloaded and loaded off/on the truck. The driver receives such authorisation to enter, either from the road office or at the self service kiosk, which is consistent with Australian Waterline standard.

